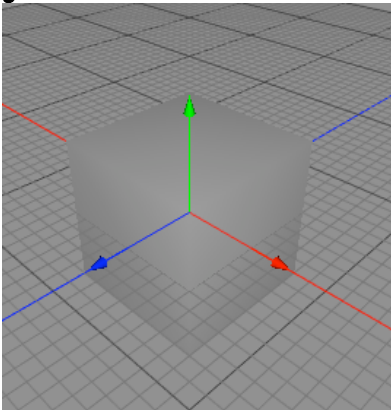


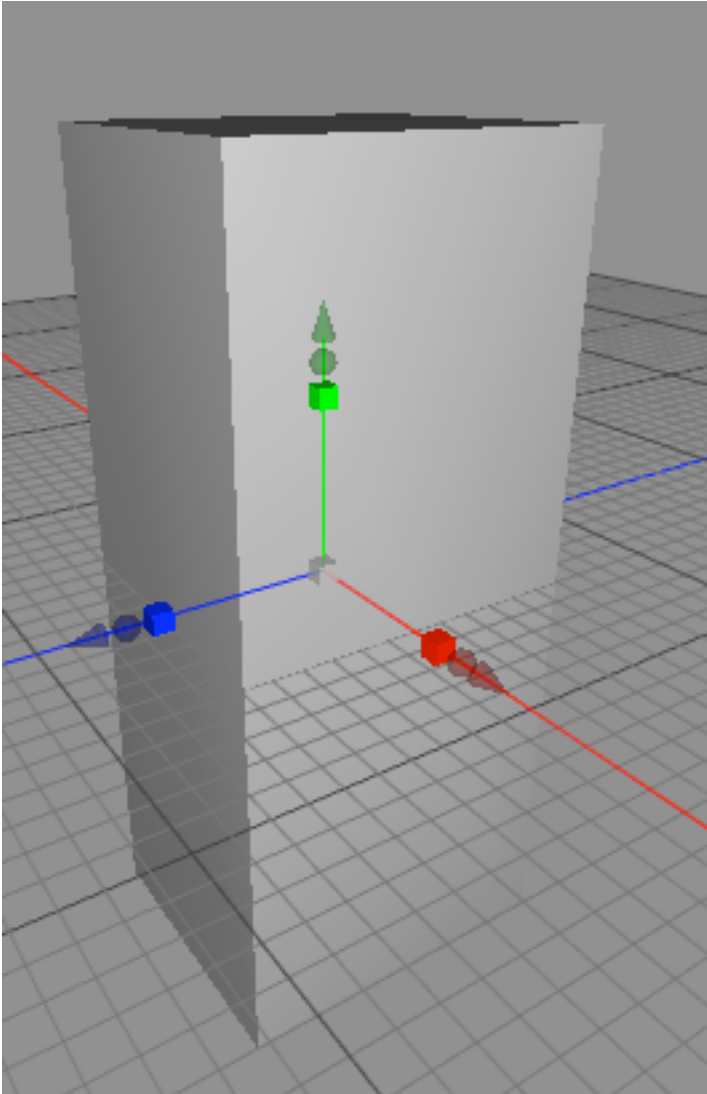
How to prepare a person in cheetah 3d

First start out by sketching your character out (we will use symmetry so you don't have to draw the whole body.)

Open cheetah 3d and add a box to your scene

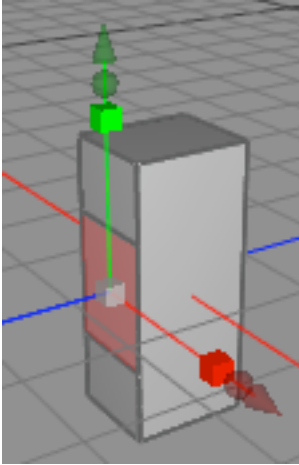


stretch it to the shape of the character.

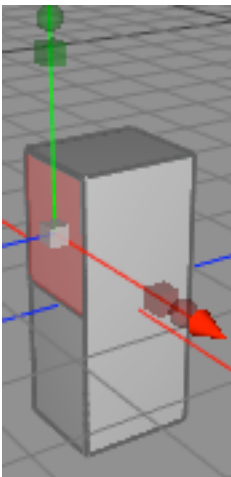


**this is my shape now make the box
editable**

**and use the cover tool to make
this(this is the arm slot so make it
any size):**



then move the face up to the shoulder:



that's it use that technique for the legs peace out!